

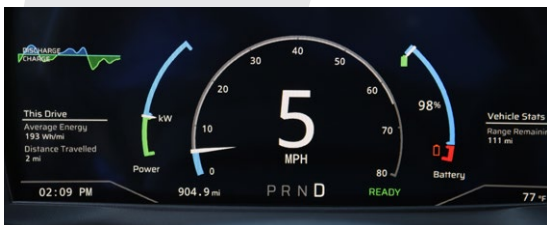


FLEETS POWERED BY LIGHTNING

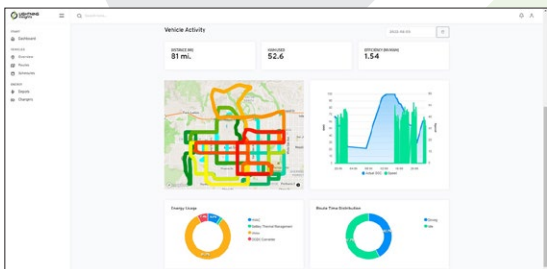
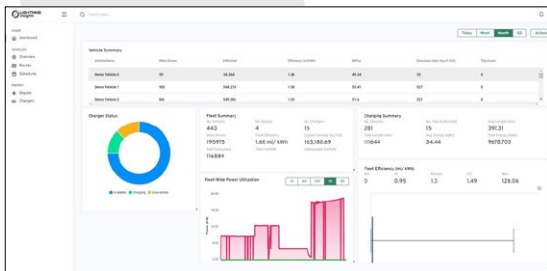
Lightning eMotors has deployed over 400 commercial EVs on the road, with nearly 3 million miles driven!

Lightning ZEV5 Class 5 truck

- ✓ Battery-electric vehicle
- ✓ Up to 150-mile range
- ✓ Smooth, quick and quiet
- ✓ Logistics / middle-mile / package delivery
- ✓ Low fuel and maintenance costs
- ✓ Lightning Insights real-time telematics
- ✓ Refrigeration systems available
- ✓ Cargo lifts available



Lightning's digital dashboard provides all the information the driver needs



Lightning Insights provides real-time and time-summarized data on the performance of your EV fleet, as well as charger and energy management

The **Lightning ZEV5 Class 5 truck** is equipped with a state-of-the-art electric drivetrain which delivers the best efficiency of any vehicle in its weight class, while providing a quiet, smooth and familiar driving experience that your drivers will love. Ideal for middle-mile logistics, package delivery, food and beverage operations and more, the Lightning ZEV5 brings sustainability to your fleet.



Offering a very useful 150-mile on-road range, this truck provides practical, reliable service while producing zero emissions. The vehicle offers flexible charging with both Level 2 AC charging and DC Fast Charge supported.

We use industry-proven components including thermally-managed battery packs which deliver the best range, efficiency and lifetime of any batteries in the market. The batteries are fully under the cargo floor so your cargo space isn't compromised.

Get in touch now to request a test drive.

Let us put you in the driver's seat!

Phone: **1-800-223-0740**

Email: **info@lightningemotors.com**

Lightning ZEV5

Class 5 truck

Specifications

Base chassis	Isuzu NRR
GVWR	19,500 lbs
Wheelbase options	150 and 176 inches
Charging options	J1772 CCS1 Combo charge port Level 2 AC (up to 19.2 kW) DC Fast Charge (up to 80 kW)
Driving range*	up to 150 miles
Battery capacity	175 kWh
Time for full charge	2.5 hours with DC Fast Charge at 80 kW 10 hours with AC charging at 19.2 kW Slower charging rates will take longer
Payload**	10,200 lbs (subtract weight of upfitter body and equipment to find usable payload)
Maximum speed	65 mph (electronically limited)
Peak Power	335 HP (250 kW)
Torque Rating (after transmission)	1490 lb-ft (2020 Nm)
Warranty	Base Chassis: Isuzu standard warranty Electric powertrain and batteries: Lightning eMotors standard warranty (5 year / 60,000 miles)
Analytics	✓ Preventive Maintenance ✓ Range Analysis ✓ Driver Behavior ✓ Charging Management

* All-electric range can vary depending on route or drive cycle, environmental conditions, vehicle or equipment configurations, and driver behavior.

** Payload and passenger capacity can vary and greatly depend on vehicle wheelbase, seating configuration, and other characteristics or features as delivered by the OEM or chassis manufacturer. Equipment added to the base chassis by aftermarket upfitters or equipment installers could also affect payload and passenger capacity.

Lightning's team of fleet experts stand behind our work and provide exceptional customer service, from vehicle deployment and technical support to custom analytics reports and operator training.

Contact us today!

Phone: **1-800-223-0740 / +1 970-744-4047**

Email: **info@lightningemotors.com**



Save vehicle downtime with no emissions testing



Zero emissions means cleaner air in communities you serve



Fewer parts means lower maintenance costs



Regenerative braking dramatically reduces brake wear



Significant savings on operating costs



BEVs save money on fuel costs

November 2022. The information presented here may be subject to change at any time.

@ 2022 Lightning eMotors

info@lightningemotors.com

lightningemotors.com



LIGHTNING
e M O T O R S