

## Lightning ZEV5 F-550 Shuttle

- ✓ Battery-electric vehicle
- ✓ Smooth, quick and quiet
- ✓ Elegant integration with batteries fully under the floor
- ✓ CARB certified
- ✓ Installation, maintenance and service performed by Lightning eMotors or certified partners
- ✓ Eligible for FTA low and no emission funding


**LIGHTNING**  
**ZEV5**

The **Lightning ZEV5 F-550's** electric drive-train delivers great range and efficiency while providing a quiet, smooth and familiar driving experience that your drivers – and passengers – will love.

With an estimated range of up to 130 miles, this vehicle provides practical, reliable service while producing zero emissions on the road. Charging is flexible, with Level 2 AC charging as standard, and DC Fast Charging available, providing up to 80 kW for a fast turn-around.

We use the highest-quality components available, including our thermally-managed batteries which deliver the best range, efficiency and lifetime of any batteries in the market. The batteries are fully under the floor so your cargo or passenger space isn't compromised.

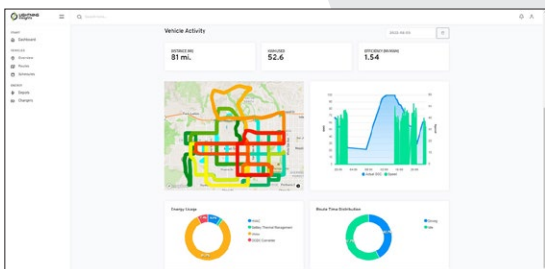
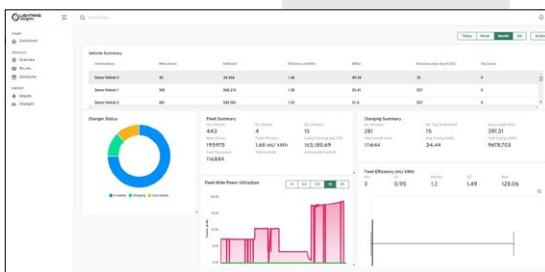
Our close partnership with Forest River provides electric shuttles under your favorite brands:



FOREST RIVER BUS



Lightning's digital dashboard provides all the information the driver needs



Lightning Insights provides real-time and time-summarized data on the performance of your EV fleet, as well as charger and energy management

**Let us put you in the driver's seat!**

Phone: **1-800-223-0740**

Email: [info@lightningemotors.com](mailto:info@lightningemotors.com)

COMPLIANT WITH  
**BUY AMERICA**  
 Federal Transit Administration

Lightning eMotors' EV powertrain is over 83% domestic origin by cost

COMPLIANT WITH  
**BUY AMERICAN**  
 Federal Aviation Administration

Satisfies conditions (A) & (B) of Title 49 U.S.C. § 50101(b)(3)

# Lightning ZEV5 F-550 Shuttle



## Specifications

Base Chassis	Ford F-550 (regular cab)
GVWR**	19,500 lbs
Wheelbase	238 in
Charging options	Level 2 AC (6.6 kW standard; 13.2 kW optional) DC Fast Charge optional (up to 80 kW) Connector: J1772 CCS Type 1 combo
All electric range*	up to 130 miles
Battery capacity	120-160 kWh
Estimated charge time	2 hours (DC Fast Charge at up to 80 kW) 8.5 hours (Level 2 AC at 13.2 kW)
Maximum speed	65 mph (electronically limited)
Peak power	241 HP (180 kW)
Torque rating	811 lb-ft (1100 Nm)
Warranty	<ul style="list-style-type: none"> <li>✓ Base Chassis: Ford standard warranty</li> <li>✓ EV Conversion: Lightning eMotors standard warranty (Powertrain and battery 5 year / 60,000 miles)</li> </ul>
Analytics	<ul style="list-style-type: none"> <li>✓ Preventive Maintenance</li> <li>✓ Range Analysis</li> <li>✓ Driver Behavior</li> <li>✓ Charging Management</li> </ul>

\* All-electric range can vary depending on route or drive cycle, environmental conditions, vehicle or equipment configurations, and driver behavior.

\*\* Payload and passenger capacity can vary and greatly depend on vehicle wheelbase, seating configuration, and other characteristics or features as delivered by the OEM or chassis manufacturer. Equipment added to the base chassis by aftermarket upfitters or equipment installers could also affect payload and passenger capacity.

Lightning's team of fleet experts stand behind our work and provide exceptional customer service, from vehicle deployment and technical support to custom analytics reports and operator training.



Save vehicle downtime with no emissions testing



Zero emissions means cleaner air in communities you serve



Fewer parts means lower maintenance costs



Regenerative braking dramatically reduces brake wear



Significant savings on operating costs



BEVs save money on fuel costs

## Contact us today!

Phone: **1-800-223-0740 / +1 970-744-4047**

Email: **info@lightningemotors.com**

November 2022. The information presented here may be subject to change at any time.

@ 2022 Lightning eMotors

info@lightningemotors.com

lightningemotors.com

