

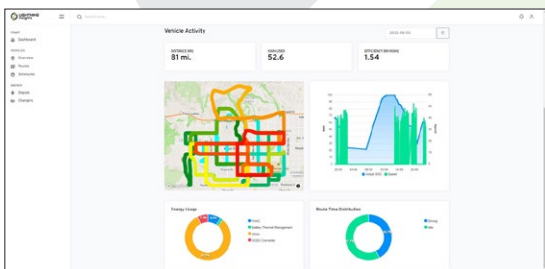
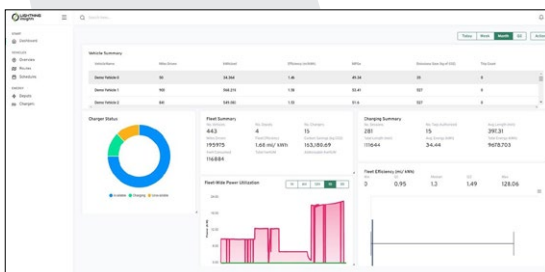


Lightning ZEV3 Transit Cargo Van

- ✓ Battery-electric vehicle
- ✓ Smooth, quick and quiet
- ✓ Engineered and built in the USA
- ✓ Class-leading efficiency
- ✓ Elegant cabin integration with batteries fully under the floor
- ✓ CARB certified and HVIP eligible
- ✓ Lightning Insights real-time telematics



Lightning’s digital dashboard provides all the information the driver needs



Lightning Insights provides real-time and time-summarized data on the performance of your EV fleet, as well as charger and energy management

The **Lightning ZEV3 Transit cargo van** is equipped with a state-of-the-art electric drivetrain which delivers the best efficiency of any vehicle in its weight class, while providing a quiet, smooth and familiar driving experience that your drivers will love.



Operated by major parcel carriers, hospital systems and others across North America, the cargo van is reliable and efficient.

Available in battery-electric versions offering 140-mile and 200-mile ranges, this van provides practical, reliable service while producing zero emissions on the road. Charging is simple and quick, with both Level 2 AC charging and DC Fast Charge supported.

We use industry-proven components including thermally-managed battery packs which deliver the best range, efficiency and lifetime of any batteries in the market. The batteries are fully under the floor so your cargo space isn’t compromised.

Get in touch now to request a test drive.

Let us put you in the driver’s seat!

Phone: **1-800-223-0740**

Email: **info@lightningemotors.com**



Lightning eMotors’ EV powertrain is over 83% domestic origin by cost



Satisfies conditions (A) & (B) of Title 49 U.S.C. § 50101(b)(3)

Lightning ZEV3 Transit Cargo Van



Specifications

Base chassis	Ford Transit 350HD Cargo Van	
GVWR	10,360 or 11,000 lbs	
Wheelbase	148 in	
Charging options	Level 2 AC up to 13.2 kW and DC Fast Charge (up to 80 kW) with J1772 CCS1 Combo	
Efficiency	72 MPGe / EPA City and 66 MPGe / EPA Highway	
Driving range*	up to 140 miles	up to 200 miles
Battery capacity	80 kWh	120 kWh
Charge time	5 hours (Level 2, at up to 13.2 kW) 1.5 hours (DC Fast Charge, at up to 80 kW)	8.5 hours (Level 2, at up to 13.2 kW) 2 hours (DC Fast Charge, at up to 80 kW)
Payload**	3,498 lbs (10,360 GVWR) 4,138 lbs (11,000 GVWR)	2,859 lbs (10,360 GVWR) 3,499 lbs (11,000 GVWR)
Maximum speed	65 mph (electronically limited)	
Peak Power	215 HP (160 kW)	
Torque Rating (after transmission)	733 lb-ft (994 Nm)	
ADA lift available	Yes	
Warranty	Base Chassis: Ford standard warranty Electric powertrain and batteries: Lightning eMotors standard warranty (5 year / 60,000 miles)	
Analytics	✓ Preventive Maintenance ✓ Range Analysis ✓ Driver Behavior ✓ Charging Management	

* All-electric range can vary depending on route or drive cycle, environmental conditions, vehicle or equipment configurations, and driver behavior.

** Payload and passenger capacity can vary and greatly depend on vehicle wheelbase, seating configuration, and other characteristics or features as delivered by the OEM or chassis manufacturer. Equipment added to the base chassis by aftermarket upfitters or equipment installers could also affect payload and passenger capacity.

Lightning's team of fleet experts stand behind our work and provide exceptional customer service, from vehicle deployment and technical support to custom analytics reports and operator training.

Contact us today!

Phone: **1-800-223-0740 / +1 970-744-4047**

Email: **info@lightningemotors.com**



Save vehicle downtime with no emissions testing



Zero emissions means cleaner air in communities you serve



Fewer parts means lower maintenance costs



Regenerative braking dramatically reduces brake wear



Significant savings on operating costs



BEVs save money on fuel costs

November 2022. The information presented here may be subject to change at any time.

@ 2022 Lightning eMotors

info@lightningemotors.com

lightningemotors.com

