

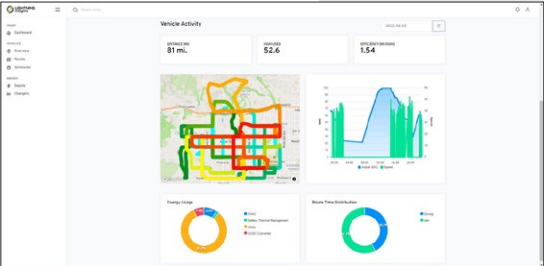
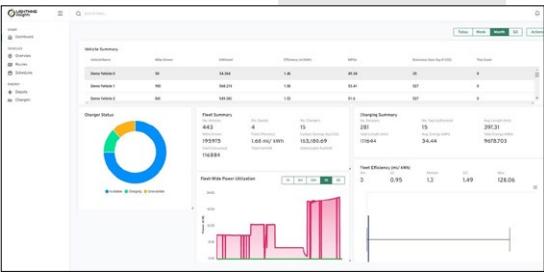


Lightning ZEV3 Transit Ambulance Type II

- ✓ Engineered and built in the USA
- ✓ Battery-electric vehicle
- ✓ Smooth, quick and quiet
- ✓ Class-leading efficiency
- ✓ Additional DC-DC converter to operate 12V auxiliary power for medical equipment and lighting
- ✓ Elegant cabin integration with batteries fully under the floor
- ✓ CARB and HVIP certified
- ✓ Available on GSA Fleet SIN 212E
- ✓ Installation, maintenance and service performed by certified partners



Lightning's digital dashboard provides all the information the driver needs



Lightning Insights provides real-time and time-summarized data on the performance of your EV fleet, as well as charger and energy management

The **Lightning ZEV3 Transit Ambulance Type II** is equipped with a state-of-the-art electric drivetrain which delivers the best efficiency of any vehicle in its weight class, while providing a quiet, smooth and familiar driving experience that your EMTs – and patients – will love.



Available in 140-mile and 200-mile range versions, this van provides practical, reliable service while producing zero emissions on the road. Charging is simple and quick, with both Level 2 AC charging and DC Fast Charge supported. Lightning supports HV battery integration for direct connection to supplemental HVAC components.

Medical equipment and emergency lights are supported with an additional inverter providing auxiliary 12V DC power. We use the highest-quality components available, including our thermally-managed batteries which deliver the best range, efficiency and lifetime of any batteries in the market.

Let us put you in the driver's seat!

Phone: **1-800-223-0740**

Email: **info@lightningemotors.com**

Lightning ZEV3 Transit Ambulance Type II



Specifications


Base chassis	Ford Transit 350HD Van	
GVWR	10,360 or 11,000 lb versions	
Wheelbase	148 in	
Charging options	Level 2 AC at 13.2 kW and DC Fast Charge (up to 80 kW) with J1772 CCS1 Combo	
Efficiency	72 MPGe / EPA City and 66 MPGe / EPA Highway	
Driving range*	up to 140 miles	up to 200 miles
Battery capacity	80 kWh	120 kWh
Charge time	5 hours (Level 2, at up to 13.2 kW) 1.5 hours (DC Fast Charge, at up to 80 kW)	8.5 hours (Level 2, at up to 13.2 kW) 2 hours (DC Fast Charge, at up to 80 kW)
Maximum speed	65 mph (electronically limited)	
Peak power	215 HP (160 kW)	
Torque rating (after transmission)	733 lb-ft (994 Nm)	
Warranty	Base Chassis: Ford standard warranty EV powertrain: Lightning eMotors standard warranty (Powertrain and battery 5 year / 60,000 miles)	
Analytics	✓ Preventive Maintenance ✓ Range Analysis ✓ Driver Behavior ✓ Charging Management	


* All-electric range can vary depending on route or drive cycle, environmental conditions, vehicle or equipment configurations, and driver behavior.


Lightning's team of fleet experts stand behind our work and provide exceptional customer service, from vehicle deployment and technical support to custom analytics reports and operator training.


Contact us today!


Phone: **1-800-223-0740 / +1 970-744-4047**
Email: **info@lightningemotors.com**


 Save vehicle downtime with no emissions testing

 Zero emissions means cleaner air in communities you serve

 Fewer parts means lower maintenance costs

 Regenerative braking dramatically reduces brake wear

 Significant savings on operating costs

 BEVs save money on fuel costs

Up to \$45,000 per vehicle vouchers available now in California. Call today for expert incentives support!

November 2022. The information presented here may be subject to change at any time.

@ 2022 Lightning eMotors

info@lightningemotors.com

lightningemotors.com

