

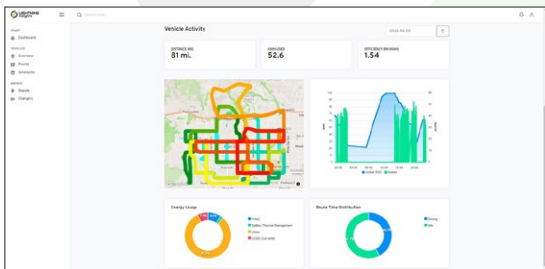
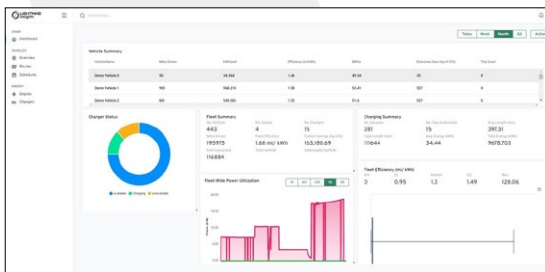


# Lightning Repower: Zero Emission City Transit Bus

- ✓ Converts a diesel bus into a battery-electric vehicle
- ✓ Smooth and powerful handling
- ✓ Zero emissions
- ✓ Installation, maintenance and service performed by certified partners
- ✓ Lightning powertrain warranty



Lightning's digital dashboard provides all the information the driver needs



Lightning Insights provides real-time and time-summarized data on the performance of your EV fleet, as well as charger and energy management

The **Lightning City Bus Repower** solution is a great way to extend the life of older buses by replacing their diesel or CNG engines with clean, quiet battery-electric powertrains. Much less expensive than purchasing a new electric bus, and with a much shorter lead time from order to deployment, the Lightning Repower solution is an ideal way to convert your aging diesel or CNG fleet to electric.

With some jurisdictions (such as the State of California) requiring city buses to be zero-emissions vehicles in the relatively near future, we can provide the lowest-cost path to meeting this requirement.

Electric repowered buses are eligible for Federal funding programs such as the Federal Transit Administration's [Low and No Emission Vehicle Program](#). Lightning can assist fleets to take advantage of the various government funding opportunities that are available.

**Let us put you in the driver's seat!**

Phone: **1-800-223-0740** Email: [info@lightningemotors.com](mailto:info@lightningemotors.com)



Lightning eMotors' EV powertrain is over 83% domestic origin by cost

Satisfies conditions (A) & (B) of Title 49 U.S.C. § 50101.(b)(3)

# Lightning Repower: Zero Emission City Transit Bus



## Specifications

Base chassis	Transit bus low floor
GVWR	up to 44,000 lbs
Bus length	40 ft only
Charging options	DC Fast Charge (100+ kW) and Level 2 AC (up to 22 kW) with J1772 CCS-1 Combo
All electric range*	up to 225 miles
Battery capacity	up to 560 kWh
Estimated charge time	5.5 hours (DC Fast Charge)
Passenger capacity**	up to 70 (seated and standing)
Maximum speed	65 mph (electronically limited)
Peak power	295 HP (220 kW)
Torque rating	1823 lb-ft (2471 Nm)
Warranty	✓ EV Repower: Lightning eMotors standard warranty (Powertrain and battery 5 year / 60,000 miles)
Analytics	✓ Preventive Maintenance ✓ Range Analysis ✓ Driver Behavior ✓ Charging Management

\* All-electric range can vary depending on route or drive cycle, environmental conditions, vehicle or equipment configurations, and driver behavior.

\*\* Payload and passenger capacity can vary and greatly depend on vehicle wheelbase, seating configuration, and other characteristics or features as delivered by the OEM or chassis manufacturer. Equipment added to the base chassis by aftermarket upfitters or equipment installers could also affect payload and passenger capacity.

Lightning's team of fleet experts stand behind our work and provide exceptional customer service, from vehicle deployment and technical support to custom analytics reports and operator training.



Save vehicle downtime with no emissions testing



Zero emissions means cleaner air in communities you serve



Fewer parts means lower maintenance costs



Regenerative braking dramatically reduces brake wear



Significant savings on operating costs



BEVs save money on fuel costs

## Contact us today!

Phone: **1-800-223-0740 / +1 970-744-4047**

Email: **[info@lightningsystems.com](mailto:info@lightningsystems.com)**

September 2022. The information presented here may be subject to change at any time.

© 2022 Lightning eMotors

[info@lightningemotors.com](mailto:info@lightningemotors.com)

[lightningemotors.com](http://lightningemotors.com)

