

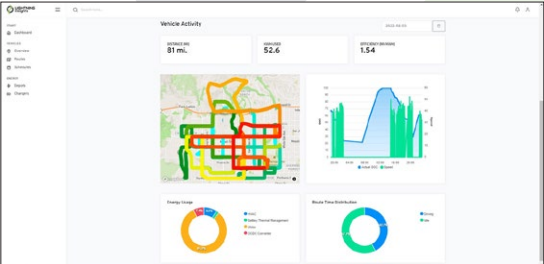
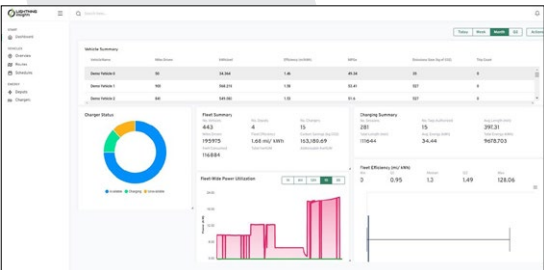


Lightning ZEV4 Type A School Bus

- ✓ Battery-electric vehicle
- ✓ Smooth, quick and quiet
- ✓ Engineered and built in the USA
- ✓ Elegant cabin integration with batteries fully under the floor
- ✓ CARB certified and HVIP eligible
- ✓ Lightning Insights real-time telematics
- ✓ Available New or Repower



Lightning’s digital dashboard provides all the information the driver needs



Lightning Insights provides real-time and time-summarized data on the performance of your EV fleet, as well as charger and energy management

The **Lightning ZEV Type A school bus**, built in partnership with REV Group’s Collins Bus Corporation, is a state-of-the-art electric vehicle which provides a quiet, smooth and familiar driving experience that your drivers – and students – will love.



It is available on a choice of two trusted and widely-used platforms:

- GMC Savana 4500 / Chevrolet Express 4500
- Ford E-450

Available with an estimated 130-mile range, this vehicle provides practical, reliable service while producing zero emissions on the road. Charging is simple and quick, with both Level 2 AC charging and DC Fast Charge supported.

We use the highest-quality components available, including thermally-managed batteries which deliver the best range, efficiency and lifetime of any batteries in the market.

Our close relationship with Collins Bus makes these electric school buses easy to purchase through their dealer network.



Let us put you in the driver’s seat!

Phone: **1-800-223-0740**
Email: info@lightningemotors.com



Lightning eMotors’ EV powertrain is over 83% domestic origin by cost

Lightning ZEV4 Type A School Bus



Specifications

Base chassis	Ford E-450 Cutaway	GMC Savana 4500 Cutaway
GVWR	14,500 lbs	14,200 lbs
Wheelbase	158 in	159in
Charging options	Level 2 AC (up to 13.2 kW) and DC Fast Charge (up to 80 kW) with J1772 CCS1 Combo	
Driving range*	up to 130 miles	
Battery capacity	125 kWh	120 kWh
Charge time	7.5 - 8.5 hours (Level 2 at up to 13.2 kW) 2 - 2.5 hours (DC Fast Charge at up to 80 kW)	
Passenger capacity**	up to 24	
Maximum speed	65 mph (electronically limited)	
Peak power	241 HP (180 kW)	
Torque rating (after transmission)	790 lb-ft (1071 Nm)	
Warranty	Base Chassis: Ford standard warranty Electric powertrain and batteries: Lightning eMotors standard warranty (5 year / 60,000 miles)	Base Chassis: GM standard warranty Electric powertrain and batteries: Lightning eMotors standard warranty (5 year / 60,000 miles)
Analytics	✓ Preventive Maintenance ✓ Range Analysis ✓ Driver Behavior ✓ Charging Management	

* All-electric range can vary depending on route or drive cycle, environmental conditions, vehicle or equipment configurations, and driver behavior.

** Payload and passenger capacity can vary and greatly depend on vehicle wheelbase, seating configuration, and other characteristics or features as delivered by the OEM or chassis manufacturer. Equipment added to the base chassis by aftermarket upfitters or equipment installers could also affect payload and passenger capacity.

Lightning's team of fleet experts stand behind our work and provide exceptional customer service, from vehicle deployment and technical support to custom analytics reports and operator training.

Contact us today!

Phone: **1-800-223-0740 / +1 970-744-4047**

Email: **info@lightningsystems.com**



Save vehicle downtime with no emissions testing



Zero emissions means cleaner air in communities you serve



Fewer parts means lower maintenance costs



Regenerative braking dramatically reduces brake wear



Significant savings on operating costs



BEVs save money on fuel costs

August 2022. The information presented here may be subject to change at any time.

© 2022 Lightning eMotors

info@lightningemotors.com

lightningemotors.com

