

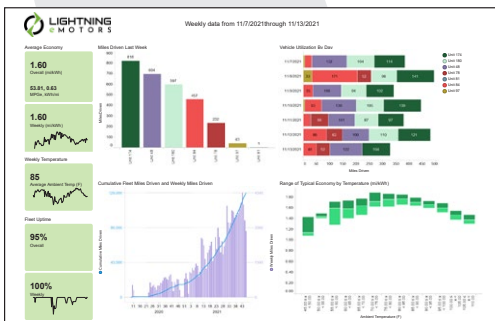


Lightning Electric E-450 Shuttle Bus

- ✓ Battery-electric vehicle
- ✓ Smooth, quick and quiet
- ✓ Engineered and built in the USA
- ✓ Elegant cabin integration with batteries fully under the floor
- ✓ CARB certified and HVIP eligible
- ✓ Lightning Analytics gives insight into usage and efficiency
- ✓ Available New or Repower



Lightning's digital dashboard provides all the information the driver needs



Lightning Analytics provides real-time and time-summarized data on the performance of our EVs in your fleet

The **Lightning Electric E-450** is a versatile and trusted platform equipped by Lightning eMotors with a state-of-the-art electric drivetrain which provides a quiet, smooth and familiar driving experience that your drivers will love.

Available in 130-mile and 160-mile range versions, this vehicle provides practical, reliable service while producing zero emissions on the road. Charging is simple and quick, with both Level 2 AC charging and DC Fast Charge supported.

We use the highest-quality components available, including thermal-managed batteries which deliver the best range, efficiency and life-time of any batteries in the market.

Our close partnership with Forest River provides electric shuttles under your favorite brands:



FOREST RIVER BUS



Let us put you in the driver's seat!

Phone: **1-800-223-0740** Email: **info@lightningemotors.com**



Lightning eMotors' EV powertrain is over 83% domestic origin by cost



Satisfies conditions (A) & (B) of Title 49 U.S.C. § 50101(b)(3)

Lightning Electric E-450 Shuttle Bus



Specifications

Base chassis	E-450 Cutaway		
GVWR	14,500 lbs		
Wheelbase	158 in – 190 in		
Charging options	Level 2 AC (up to 13.2 kW) and DC Fast Charge (up to 80 kW) with J1772 CCS1 Combo		
Driving range*	up to 130 miles	up to 160 miles	
Battery capacity	125 kWh (nameplate) 100 kWh (usable)	157 kWh (nameplate) 125 kWh (usable)	
Charge time	7.5 - 8.5 hours (Level 2 at up to 13.2 kW) 2 - 2.5 hours (DC Fast Charge at up to 80 kW)	10 - 11 hours (Level 2 at up to 13.2 kW) 3 - 4 hrs (DC Fast Charge at up to 80 kW)	
Passenger capacity**	Up to 24 passengers with various layout options		
Maximum speed	65 mph (electronically limited)		
Peak power	241 HP (180 kW)		
Torque rating (after transmission)	790 lb-ft (1071 Nm)		
Warranty	Base Chassis: Ford standard warranty Electric powertrain and batteries: Lightning eMotors standard warranty (5 year / 60,000 miles)		
Analytics	✓ Preventive Maintenance	✓ Range Analysis	✓ Driver Behavior

* All-electric range can vary depending on route or drive cycle, environmental conditions, vehicle or equipment configurations, and driver behavior.

** Payload and passenger capacity can vary and greatly depend on vehicle wheelbase, seating configuration, and other characteristics or features as delivered by the OEM or chassis manufacturer. Equipment added to the base chassis by aftermarket upfitters or equipment installers could also affect payload and passenger capacity.

Lightning's team of fleet experts stand behind our work and provide exceptional customer service, from vehicle deployment and technical support to custom analytics reports and operator training.

Contact us today!

Phone: **1-800-223-0740 / +1 970-744-4047**

Email: **info@lightningsystems.com**



Save vehicle downtime with no emissions testing



Zero emissions means cleaner air in communities you serve



Fewer parts means lower maintenance costs



Regenerative braking dramatically reduces brake wear



Significant savings on operating costs



BEVs save money on fuel costs

November 2021. The information presented here may be subject to change at any time.

@ 2021 Lightning eMotors

info@lightningemotors.com

lightningemotors.com

