



Lightning Electric E-450 Box Truck

- ✓ Battery-electric vehicle
- ✓ Smooth, quick and quiet
- ✓ Engineered and built in the USA
- ✓ Elegant cabin integration with batteries fully under the floor
- ✓ CARB certified and HVIP eligible
- ✓ Lightning Analytics gives insight into usage and efficiency
- ✓ Available New or Repower



The **Lightning Electric E-450** is a versatile and trusted platform equipped by Lightning eMotors with a state-of-the-art electric drive-train which provides a quiet, smooth and familiar driving experience that your drivers will love.

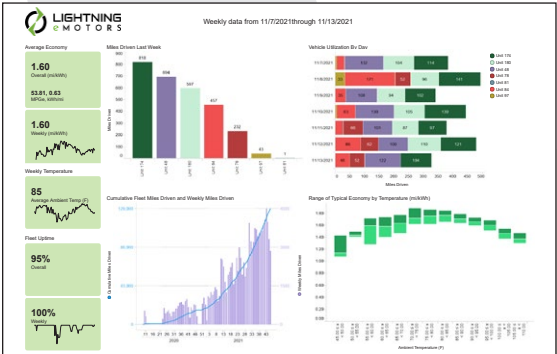
Available in 130-mile and 160-mile range versions, this vehicle provides practical, reliable service while producing zero emissions on the road. Charging is simple and quick, with both Level 2 AC charging and DC Fast Charge supported.

We use the highest-quality components available, including thermally-managed batteries which deliver the best range, efficiency and lifetime of any batteries in the market.

Available with cargo lifts, refrigeration systems and other upfit options, this flexible vehicle is your route to reliable and cost-effective zero-emission operations in your community.



Lightning's digital dashboard provides all the information the driver needs



Lightning Analytics provides real-time and time-summarized data on the performance of our EVs in your fleet

Let us put you in the driver's seat!

Phone: **1-800-223-0740**

Email: info@lightningemotors.com



Lightning eMotors' EV powertrain is over 83% domestic origin by cost



Satisfies conditions (A) & (B) of Title 49 U.S.C. § 50101(b)(3)

Lightning Electric E-450 Box Truck



Cargo lifts are among the supported upfits for the Lightning Electric E-450

Specifications

Base chassis	E-450 Cutaway		
GVWR	14,500 lbs		
Wheelbase	158 - 190 in		
Charging options	Level 2 AC (up to 13.2 kW) and DC Fast Charge (up to 80 kW) with J1772 CCS1 Combo		
Driving range*	up to 130 miles	up to 160 miles	
Battery capacity	125 kWh (nameplate) 100 kWh (usable)	157 kWh (nameplate) 125 kWh (usable)	
Charge time	7.5 - 8.5 hours (Level 2 at up to 13.2 kW) 2 - 2.5 hours (DC Fast Charge at up to 80 kW)	10 - 11 hours (Level 2 at up to 13.2 kW) 3 - 4 hrs (DC Fast Charge at up to 80 kW)	
Payload capacity**	7,980 lbs (subtract weight of upfitter body and equipment to find usable payload)	7,200 lbs (subtract weight of upfitter body and equipment to find usable payload)	
Maximum speed	65 mph (electronically limited)		
Peak power	241 HP (180 kW)		
Torque rating (after transmission)	790 lb-ft (1071 Nm)		
Warranty	Base Chassis: Ford standard warranty Electric powertrain and batteries: Lightning eMotors standard warranty (5 year / 60,000 miles)		
Analytics	✓ Preventive Maintenance	✓ Range Analysis	✓ Driver Behavior

* All-electric range can vary depending on route or drive cycle, environmental conditions, vehicle or equipment configurations, and driver behavior.

** Payload and passenger capacity can vary and greatly depend on vehicle wheelbase, seating configuration, and other characteristics or features as delivered by the OEM or chassis manufacturer. Equipment added to the base chassis by aftermarket upfitters or equipment installers could also affect payload and passenger capacity.

Lightning's team of fleet experts stand behind our work and provide exceptional customer service, from vehicle deployment and technical support to custom analytics reports and operator training.

Contact us today!

Phone: **1-800-223-0740 / +1 970-744-4047**

Email: **info@lightningsystems.com**



Save vehicle downtime with no emissions testing



Zero emissions means cleaner air in communities you serve



Fewer parts means lower maintenance costs



Regenerative braking dramatically reduces brake wear



Significant savings on operating costs



BEVs save money on fuel costs

November 2021. The information presented here may be subject to change at any time.

@ 2021 Lightning eMotors

info@lightningemotors.com

lightningemotors.com

