



Lightning Electric Vehicles

FLEETS POWERED BY LIGHTNING

Lightning eMotors designs, manufactures and installs high-quality battery-electric drivetrains for popular medium- and heavy-duty commercial vehicles. Whether you need a passenger shuttle or a food truck, we have the vehicle for you.

Transit 350HD passenger shuttle and cargo van

This popular and versatile Class 3 van gives a refined and quiet ride with great range and reliability.

- Battery capacity options: 43 kWh, 86 kWh
- Typical ranges*: 60 miles, 120 miles
- Level 2 AC and DC Fast Charge (J1772 CCS-1 Combo)
- Buy America compliant. Ford eQVM. CARB certified.



E-450 shuttle and cutaway

A mainstay of the shuttle industry, the E-450 is a trusted platform that's even better as a fully electric vehicle.

- Battery capacity options: 86 kWh, 129 kWh
 - Typical ranges*: 80 miles, 110 miles
- Level 2 AC and DC Fast Charge (J1772 CCS-1 Combo)
- Buy America compliant. Ford eQVM. CARB certified.

F-53 / F-59 delivery van and food truck

From delivering packages to serving food, the F-59 is a familiar sight on the streets. The electric range easily covers delivery and food truck routes.

- Battery capacity options: 96 kWh, 128 kWh
- Typical ranges*: 80 miles, 110 miles
- Level 2 AC and DC Fast Charge (J1772 CCS-1 Combo)
- Ford eQVM. CARB certified.



F-550 bus and truck

Filling the space between shuttles and transit buses, the electric F-550 bus produces no emissions and gives a quiet ride.

- Battery capacity options: 128 kWh, 160 kWh
 - Typical ranges*: To be confirmed
- Level 2 AC and DC Fast Charge (J1772 CCS-1 Combo)
 - Ford eQVM.

GM 6500XD Low Cab Forward Class 6 truck

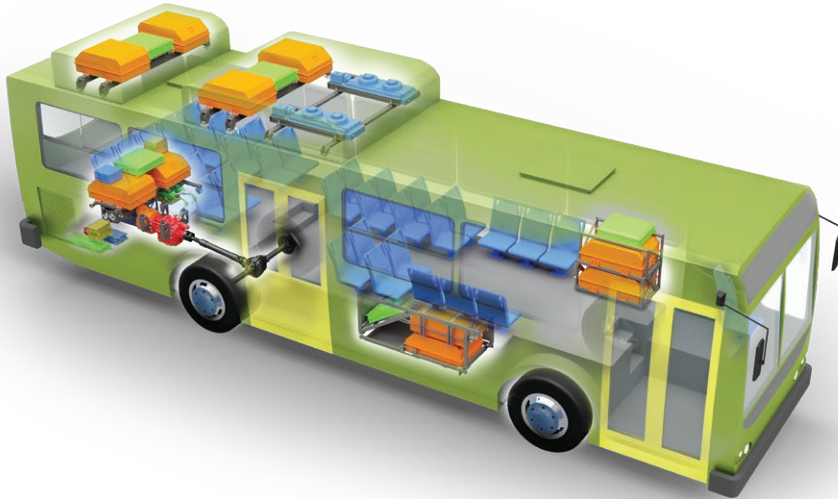
The electric GM 6500XD is ideal for logistics and large package delivery, and eliminates the pollution and noise of the equivalent diesel vehicle.

- Battery capacity options: 96 kWh, 128 kWh, 160 kWh, 192 kWh
- Typical ranges*: 66 miles, 88 miles, 110 miles, 130 miles
- DC Fast Charge (J1772 CCS-1 Combo)
- CARB certified.



* All-electric range can vary depending on route or drive cycle, environmental conditions, vehicle or equipment configurations, and driver behavior.

Lightning Electric City Transit Bus Repower



Repowering an aging diesel bus with an battery-electric drivetrain gives a new lease of life to a vehicle that would otherwise be scrapped, while also delivering a zero-emissions, quiet ride for your passengers.

Much less expensive than purchasing a new electric bus, and with much shorter lead times, the LightningElectric Bus Repower solution helps you to meet your city or state's goals for zero emission public transportation.

- Battery capacity options: Up to 320 kWh
 - Typical ranges*: 140 to 200 miles
 - DC Fast Charge (J1772 CCS-1 Combo)

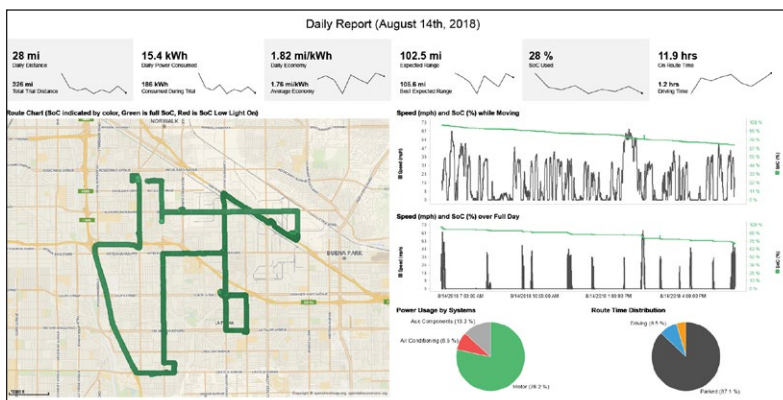
Charging Stations

Planning and implementing the charging infrastructure for an electric fleet can be complex and expensive, so Lightning Energy makes it a little easier by offering a comprehensive range of charging stations (EVSE). The range includes Level 2 AC chargers (7.2 kW, 9.6 kW and 16.8 kW) and DC Fast Chargers (25 kW and 50 kW). We can also project-manage your entire charging infrastructure deployment.

Visit lightningenergy.biz



Lightning Analytics



Lightning Analytics, our technical subscription service, goes much deeper than most commercial telematics solutions. By reporting GPS location and as many as 70 vehicle parameters every second over a 4G connection, a rich set of data on every vehicle's activities and status is collected.

Using sophisticated analysis tools, we generate reports for our customers, allowing fleet managers to track the performance and health of their Lightning electric vehicles, and to understand the impact on efficiency of factors such as weather and terrain.

Contact us today!

Phone: **1-800-223-0740 / +1 970-744-4047**

Email: info@lightningemotors.com

Lightning eMotors is a proud member of Ford's eQVM program.



October 2020. The information presented here may be subject to change at any time.

@ 2020 Lightning eMotors

info@lightningemotors.com

lightningemotors.com

